

**Indiana State University**  
**Board of Trustees**  
**Schedule of Activities**  
**September 29-30 & October 1, 2016**

**Thursday, September 29, 2016**

- 2:00 p.m. Seminar: Freshmen Recruitment (John Beacon), State Room, Tirey Hall
- 2:45 p.m. Seminar: Student Success (Mike Licari), State Room, Tirey Hall
- 3:30 p.m. Executive Session, State Room, Tirey Hall
- 4:15 p.m. Finance Committee, State Room, Tirey Hall
- 5:00 p.m. Meet and greet with President's Scholars, Moore Welcome Center
- 6:00 p.m. Hall of Fame Dinner, Sycamore Banquet Center  
Reception at 6:00 p.m., Dinner at 6:30 p.m.

**Friday, September 30, 2016**

- 9:00 a.m. Foundation Board Meeting (For trustees who are on the Foundation Board)
- 11:30 a.m. Board of Trustee lunch, African American Cultural Center
- 12:30 p.m. African American Cultural Center ribbon-cutting and campus-wide reception
- 1:45 p.m. Agenda meeting, State Room, Tirey Hall
- 4:00 p.m. Trike Race, Michael Simmons Student Activity Center
- 6:30 p.m. Distinguished Alumni Award Reception, Sycamore Banquet Center, Hulman Memorial Student Union
- 7:30 p.m. Distinguished Alumni Award Program, Sycamore Banquet Center, Hulman Memorial Student Union

**Saturday, October 1, 2016**

- 9:00 a.m. Blue & White Parade, 9<sup>th</sup> and Cherry to Wabash Avenue to 5<sup>th</sup> Street
- 11:00 a.m. Tent City, Memorial Stadium
- 3:00 p.m. ISU vs. Missouri State, Memorial Stadium

**Minutes**  
**Friday, September 30, 2016, 1:45 p.m.**  
**Meeting of the Indiana State University Board of Trustees**  
**State Room, Tirey Hall, Terre Haute, Indiana**

---

1. **Agenda**
2. **Schedule**
3. **Call Meeting to Order**
4. **Remarks**
  - Faculty Senate Chairperson (Dr. Hawkins)
  - Staff Council Chairperson (Ms. Torrence)
  - Student Government Association President (Mr. Velazquez)
  - President of the ISU Foundation (Mr. Carpenter)
  - President of the University (Dr. Bradley)
  - Chairperson of the ISU Board of Trustees (Mr. Campbell)
5. **New Business Items**
  - 5a [For Passage, Approval of the August 25, 2016 Meeting Minutes and Certification of Executive Session](#) (Mr. Campbell)
  - 5b Finance Committee Report (Mr. Taylor)
    - 5b1 [For Passage, Disposition of Surplus Real Estate](#) (Ms. McKee)
  - 5c [For Passage, New Program Music Industry Studies Minor](#) (Dr. Licari)
  - 5d [For Passage, Conflict of Interest Disclosure Statements](#) (Dr. Bradley)
  - 5e [For Passage, Revision to Policy 660.1](#) (Dr. Bradley)
  - 5f MOU with the ISU Foundation Board (Dr. Bradley)
  - 5g For Passage, Authorization to Negotiate and Execute MOU with the ISU Foundation Board (Dr. Bradley)
6. **Items for the Information of the Trustees**
  - 6a [Investment Report](#)
  - 6b [Financial Report](#)
  - 6c [Purchasing Report](#)
  - 6d [Vendor Report](#)
  - 6e [Faculty Personnel](#)
  - 6f [Other Personnel](#)
  - 6g [Grants and Contracts](#)
  - 6h [Agreements](#)
  - 6i [Board Representation at University Events](#)
  - 6j [In Memoriam](#)
7. **Old Business**
8. **Adjournment**

**The next Agenda Meeting of the Board of Trustees will take place on campus Friday, December 16, 2016.**

**Minutes**  
**Friday, September 30, 2016, 1:45 p.m.**  
**Meeting of the Indiana State University Board of Trustees**  
**State Room, Tirey Hall, Terre Haute, Indiana**

---

### **3 Call to Order**

The Indiana State University Board of Trustees met in regular session at 1:45 p.m. on Friday, September 30, 2016 in the State Room, Tirey Hall.

Trustees present: Mr. Baesler, Ms. Bell, Mrs. Cabello, Mr. Campbell, Ms. Gravely, Mr. Minas, Mr. Pease, Mrs. Smith and Mr. Taylor.

President Bradley, Vice Presidents Banks, Beacon, Licari, McKee and Rogers were present. Also attending were Mr. Ron Carpenter, President of the ISU Foundation, Dr. Timothy Hawkins, Chairperson of the Faculty Senate, Ms. Roxanne Torrence, Chairperson of the Staff Council and Mr. Andy Velazquez, President of the Student Government Association.

There being a quorum present, Mr. Campbell called the meeting to order at 1:45 p.m.

The board also engaged in educational seminars on freshmen recruitment presented by Vice President John Beacon and student success presented by Provost Licari.

---

### **4 Remarks**

Faculty Senate Chairperson (Dr. Hawkins)  
Staff Council Chairperson (Ms. Torrence)  
Student Government Association President (Mr. Velazquez)  
President of the ISU Foundation (Mr. Carpenter)  
President of the University (Dr. Bradley)  
President of the ISU Board of Trustees (Mr. Campbell)

---

### **REPORT OF THE FACULY SENATE CHAIRPERSON (Dr. Hawkins)**

It is my pleasure to be here with you on this Homecoming Friday to report on Faculty Governance. Over the past month, Senate has met twice. At the August meeting we approved revisions to Handbook language concerning Sections 920, 922, and 923. These cover the Title IX coordinator and the Non-Discrimination Policy. With respect to curriculum, Senate approved the creation of a Music Industry Studies Minor and the elimination of the M.S. in Science Ed. for Licensed Teachers. In other business, Senate continued to approve nominations to the university-level standing committees for the new year. At the September meeting, senators received updates on the Faculty Center for Teaching Excellence and changes to university policies regarding travel.

I am pleased to report that the Senate standing committees are all meeting and considering their charges for the year. (Parenthetically, as I noted at the President's Address, I have been particularly impressed at how many ISU faculty give their time and effort to this critical university-level service. Nearly 100 regular faculty serve on the Senate Standing Committees, alone, a number that is much higher if we consider all university committees. We need to celebrate this demonstrated commitment to ISU.) At this early stage, with a couple of exceptions, the committees have not begun to report out on their

charges. As a result, Senate is enjoying some relative peace. I expect this calm interlude to end with our next meeting on 20 October.

In the interim, the Administration and Senate leadership have begun constructive discussions regarding the critical issue of departmental leadership. It is our desire to develop a culture of effective support for chairs on campus—something that the Positive Academic Leadership Workshop scheduled by Susan Powers for the end of October promises to encourage—and to nurture a new generation of department leaders.

In addition, as I mentioned the last time I was with you, revisions to university Promotion & Tenure guidelines will be a high priority this year. In order to ensure that we are on the same page, the Administration and Senate leaders have had some preliminary conversations this month. A small task force will be charged with creating a first draft this fall. The Senate Faculty Affairs Committee will then take the recommendations and move them through faculty governance.

Finally, as you look ahead to upcoming meetings I would like again to issue you an invitation to meet with senators. We have many new members this year. For them and even for the more “experienced” senators, the Board of Trustees remains somewhat more legend—and legendary—than perhaps it should. I anticipate great benefits in opening that avenue of communication.

#### **REPORT OF THE STAFF COUNCIL CHAIRPERSON (Ms. Torrence)**

The Public Relations Committee has been busy planning our homecoming activities. We started the week with themed spirit days and tomorrow we will be walking in the parade. I would like to thank the Athletic Department for the generous donation of game tickets.

The PR Committee has also been planning our Harvest party for the children of faculty and staff to have a safe and fun-filled night of treats and games.

The Employee Relations Committee is planning a rep session this month to give the staff the opportunity to listen, learn and ask questions about benefits and the Staff Council happenings.

#### **REPORT OF THE PRESIDENT OF THE STUDENT GOVERNMENT ASSOCIATION (Mr. Velazquez)**

Good afternoon President Bradley, Board of Trustees and Faculty and fellow guests. My name is Andy Velazquez, and I am proud to represent the student body. Last week during the fall address President Bradley spoke about the new strategic plan for Indiana State. We are excited that “There’s More to Blue” will continue to build upon the strengths of faculty success and a special focus on student success. We will look forward to remaining full partners of keeping students as the central focus for Indiana State University. As you are aware, SGA has been empowered with three specific initiatives in the strategic plan providing resources for student organizational growth, providing opportunities for leadership development and increasing Sycamore pride and traditions. I want to provide a quick highlight of how we are doing this semester. Student organization growth is promoted through administering of over \$70,000 in organizational funding. We have awarded \$35,000 to 81 student organizations. The remaining funds will be administered this spring. Our leadership development program’s focus is specifically on our first year students through Sycamore Leadership Coalition, SLC. We are happy to announce this year marks our largest SLC class in Sycamore history. Sycamore Pride Traditions is closing in on 1,000 Forest members. We hosted our first tailgate at Memorial Stadium during family weekend, and we have been celebrating the 100th anniversary of Homecoming all week. At this time I would like to specifically recognize and congratulate the Hulman Memorial Student Union Board and Student Homecoming Coordinating Committee for making all of this happen. We had over 3,000 students at Sycamore Sync this year and hopefully will have 3,000 more at the trike race and game.

I would like to highlight a few more things to be proud of as Sycamores. The ribbon cutting of the College of Health and Human Services Project, the grand opening of the Multi-Cultural Services Programs and Offices in HMSU and the grand re-opening of the Charles E. Brown African American Cultural Center. Shout out to Dr. Banks and the Division of Student Affairs for the vision and direction from which some of these initiatives came.

Lastly, this year SGA helped host the 3<sup>rd</sup> annual Success X Conference with the Offices of Student Success and Partner of Plan X. This year, we had record attendance of 260 students. Five of ISU's finest staff started off giving presentations then were followed by State's Alumni Corey Grant who spoke about student success and then followed with a Q & A. Afterwards there was an ice cream sundae social that gave students the opportunity to sit down and talk with the speakers. Overall it was fun night full of inspirational messages geared towards student success. We had a post survey for participants to fill out to see how we make the conference even better next year and who they would like to have speak.

Thank you again for your leadership ISU and, we look forward to hosting the thousands of alumni, friends and guests at the Homecoming activities this weekend.

### **REPORT OF THE ISU FOUNDATION PRESIDENT (Mr. Carpenter)**

Welcome to Campus!

This is the one of the most special weekends on campus – Homecoming. This year we are celebrating Indiana State's 100<sup>th</sup> Anniversary of Homecoming. We have a special scarf for you at our office which you can pick up today or tomorrow morning to commemorate this special Homecoming. These are being given to donors as well as alumni throughout the weekend. Look for other special touches throughout the weekend that mark this milestone Homecoming.

Before I move on to my traditional report, I want to share the news about the Laurie Heintz's passing. Laurie's long battle with a variety of health issues ended on the evening of Thursday, September 22. Please keep John and his family in your thoughts and prayers. John is taking time off work, but look forward to seeing him in the next couple of weeks.

#### **Foundation Restructuring**

Our goal is to move forward as best as possible to support our University. We have had a lot of good people who have helped us get to where we are today, and we remain committed to securing the resources to ensure the University's growth and success.

We must continue to build on our success. We are doing this in several ways, such as focusing on the Fund for Indiana State.

We are building substantial relationships with donors and prospects. The few development officers we have are working towards their visit and contact benchmarks.

Stewardship remains a priority. A few examples of this include:

- Increase the stewardship touches with President's Society Donors. We are excited to get Dan Bradley and the President's Office more involved with this society this year.
- Our team, in partnership with the Scholarship Office, sent out 376 Thank You Notes to donors from their 2016-17 scholarship recipients.
- New Director of Athletics, Sherard Clinkscales, has great interest in fundraising, we are increasing the touch points for our top annual donors to Sycamore Athletics.
- Working on a donor-funded visual donor honor roll art piece to be displayed in a prominent campus location.

We are committed to building our planes giving and matching gift programs.

- Both enhancements to the solicitation and stewardship for each have been updated.

We will ensure the success of the SAF Sponsorship Program

- To date, Jeremiah Turner has led the efforts to secure commitments from 28 sponsors totaling \$535,875 in cash and trade value.
- This is 84% of our projected FY17 totals.
- We are in negotiations with and developing proposals for more than a dozen potential sponsors totaling more than \$100,000.

We are committed to integrating development and alumni efforts

- The best examples of this is our events.
- The Alumni and development team are working with a number of colleges and campus departments, as well as alumni and donors, to host upcoming events in Chicago, Naples and Cincinnati.
- Other such integration opportunities include meetings, individual visits and campus tours.

With the departure of key leadership staff members and several team members joining other campus units and departments, we know we will have some gaps to fill internally.

However, having Rex, Hillary, Ben, Kim, Jade, Kale and Amy join other campus teams strengthens our fundraising efforts. They bring a unique perspective into other areas of the University that allow us to extend our work with alumni and donors and more deeply integrate the University's fundraising priorities.

Our first priority is to grow our front line fundraising team:

- We have recently hired two new development officers for the Sycamore Athletic Fund.
- Scott McGowan is a former collegiate athlete who played professional football. He has had a successful sales and marketing career with national companies, such as Indianapolis-based Lids. His passion for college athletics and ability to connect with people make him a great fit for this position.
- Morgan Patterson is also a former collegiate golfer and Terre Haute native. While earning her degree in marketing, she worked at the Country Club of Terre Haute, Terre Haute REX Baseball, and the Boys and Girls Club. These experiences have allowed her to develop relationships with important members of the community. Her familiarity with our local athletics donors and customer-service experience will greatly assist her in her work managing the Varsity Club.

We are in the process of hiring two additional development officers.

- Greg Halls will officially begin his role on October 3, but will be around throughout the weekend to begin meeting donors and alumni during the Homecoming Weekend. He is from Terre Haute and is an ISU alumnus and has worked at Ivy Tech. He is a top performer in the medical sales field and his skills coupled with his enthusiasm for his alma mater will transition nicely to this role.
- Todd LaComba will join the ISU Foundation on October 17. He is originally from the Wabash Valley and has a variety of experiences in higher education fundraising. He most recently comes from the University of Findlay where he worked as the director of annual giving and served as the development liaison for the College of Pharmacy.

Going forward, we will have several opportunities and challenges as we work through the proposed restructuring. Your leadership is extremely important in this process, and with your support, we will continue to advance the development efforts for our university.

## **REPORT OF THE UNIVERSITY PRESIDENT (Dr. Bradley)**

Good afternoon and welcome to Homecoming weekend. This is one of my favorite times of the year, and I have enjoyed attending some of the week's activities including Sycamore Sync, the Torchlight Parade and last night's Athletics Hall of Fame. I am looking forward to a great trike race this afternoon, the Distinguished Alumni Award Reception this evening, the Blue and White parade, another enormous tent city and another football victory. Of course, I hope Mother Nature shines upon us, but I know rain or shine, we will have an enjoyable time seeing our alumni, students, faculty, staff and community at these events. Thank you to everyone across campus who helps make Homecoming the biggest event of the year.

### **STATE BUDGET PRESENTATION**

On September 8, I presented the University's Budget Request to the Indiana Commission for Higher Education at its meeting on IU's campus.

The Commission presentation is the first of several budget presentations I will be making over the coming months with the final outcome unknown until the General Assembly completes its work at the end of April 2017. It is an interesting process that really isn't a budget request that deals in specific dollar amounts. In fact, some of the presidents do not even mention their requested appropriation.

I did mention specifics – asking for a 3 percent increase in our appropriation as well as \$15 million to renovate the Fine Arts Building. Our presentation is pretty straightforward and demonstrates how our strategic planning goals are in direct alignment with the state's goals. It also details how our appropriation has declined while our enrollment has grown by more than 30 percent. Indiana State remains committed to keeping our tuition increase to the CPI level and continuing to be the least expensive among Indiana four largest institutions. Our presentation clearly demonstrates the need for our appropriation to be increased.

The presentation appeared to be well-received, and I was pleased to see Rep. Tim Brown, the chair of the House Ways and Means Committee, in the audience. I look forward to working with Greg Goode and Diann McKee to continue to make our plea for increased funding as I go before the State Budget Committee in late November/early December and then onto to the House Ways and Means Committee, and the Senate Appropriation Committee. I will keep you posted on the process as it progresses.

### **LAUNCH OF NEW STRATEGIC PLAN**

At my annual address to the University last week, we officially brought "The Pathway to Success" strategic plan to a close and launched the new strategic plan "There's More to Blue." I would like to thank SGA President Andy Velasquez, Staff Council Chair Roxanne Torrence, Faculty Senate Chair Tim Hawkins and Trustee Jeff Taylor for bringing greetings on behalf of their constituents. Their thoughtful remarks provided strong evidence of the value of working collaboratively to advance our goals.

Work on the implementation of the new plan is already underway. Goal chairs will be meeting monthly with their implementation teams, and providing brief updates each month to Monica Love. Monica will be working with me to ensure that the plan keeps moving forward and remains dynamic and that progress is being made.

In closing, I would like to show a brief video that sums up how Indiana State has been able to achieve the successes it has attained over the last eight years and what it will take to build upon those successes in the coming years.

***[SHOW PHOTO MOSAIC VIDEO THAT INCLUDES TRUSTEE AND FOUNDATION BOARD PICTURES]***

In short, we have made great strides and will continue to do so with the help of all of our faculty, staff and volunteer leaders.

That concludes my report.

## **REPORT OF THE BOARD CHAIRPERSON (Mr. Campbell)**

Thank you everyone for being here to attend Homecoming weekend.

I attended the Torch Light Parade on Wednesday which was a great show of student spirit.

Thursday evening I attended a reception with the President Scholars, what a great group kids. Then I attended the Athletic Hall of Fame Dinner which was very nice.

This afternoon the Trike Race will take place and this evening the Distinguished Alumni Awards will be presented.

Tomorrow's events will be the Blue and White Parade, Tent City and the Football Game at Memorial Stadium.

---

## **5 New Business Action Items**

### **5a Approval of the Minutes of the August 25, 2016 Meeting and Certification of Executive Session**

The Indiana State University Board of Trustees met in Executive Session at 10:45 a.m. on Thursday, August 25, 2016 in the State Room, Tirey Hall.

Trustees present: Mr. Baesler, Ms. Bell, Mrs. Cabello, Mr. Campbell, Ms. Gravely, Mr. Minas, Mr. Pease, Mrs. Smith and Mr. Taylor.

5-14-1.5-6.1 (b) (2) (B) Litigation

5-14-1.5-6.1 (b) (2) (D) Purchase or Lease of Real Property

5-14-1.5-6.1 (b) (6) Personnel

The Indiana State University Board of Trustees hereby certifies that no subject matter was discussed in the Executive Session other than the subject matter specified in the public notice.

**Recommendation:** Approval of Board Minutes and Certification of Executive Session.

**On a motion by Mr. Pease. And seconded by Mr. Minas, the recommendation was approved.**



## 5b1 Disposition of Surplus Real Estate

The University owns the following parcels of property in Terre Haute, Indiana that it wishes to sell. The property is within an area north of Locust, south of 1<sup>st</sup> Avenue, west of 7<sup>th</sup> Street, and east of 3<sup>rd</sup> Street.

<u>Parcel ID</u>	<u>Street Address</u>
84-06-16-481-012	933 North 6 <sup>th</sup> Street
84-06-16-481-013	933 North 6 <sup>th</sup> Street
84-06-16-481-014	931 North 6 <sup>th</sup> Street
84-06-16-481-015	929 North 6 <sup>th</sup> Street
84-06-16-481-016	927 North 6 <sup>th</sup> Street
84-06-16-481-017	925 North 6 <sup>th</sup> Street
84-06-16-481-018	921 North 6 <sup>th</sup> Street
84-06-16-481-037	650 Lafayette Ave.
84-06-16-481-038	644 Lafayette Ave
84-06-16-481-039	644 Lafayette Ave.
84-06-16-481-042	628 Lafayette Ave.
84-06-16-481-043	626 Lafayette Ave.
84-06-16-481-044	622 Lafayette Ave.

It is recommended the resolution as presented below be approved and forwarded to the Governor of the State of Indiana declaring the real estate to be surplus and requesting permission to sell the real estate for not less than the full appraised value as determined by appraisers to be appointed by the Governor.

**Recommendation:** Approval of the Resolution as shown below.

**Mr. Taylor reported that the Finance Committee unanimously recommends the approval of the item as presented. The board voted to approve the item as presented.**

### RESOLUTION

WHEREAS, Indiana State University owns certain real estate in Terre Haute, Indiana consisting of thirteen (13) vacant lots as listed below and said real estate was not acquired by gift or devise.

<u>Parcel ID</u>	<u>Street Address</u>
84-06-16-481-012	933 North 6 <sup>th</sup> Street
84-06-16-481-013	933 North 6 <sup>th</sup> Street
84-06-16-481-014	931 North 6 <sup>th</sup> Street
84-06-16-481-015	929 North 6 <sup>th</sup> Street
84-06-16-481-016	927 North 6 <sup>th</sup> Street
84-06-16-481-017	925 North 6 <sup>th</sup> Street
84-06-16-481-018	921 North 6 <sup>th</sup> Street
84-06-16-481-037	650 Lafayette Ave.
84-06-16-481-038	644 Lafayette Ave
84-06-16-481-039	644 Lafayette Ave.
84-06-16-481-042	628 Lafayette Ave.
84-06-16-481-043	626 Lafayette Ave.
84-06-16-481-044	622 Lafayette Ave.

WHEREAS, because of limited usage and cost of maintenance said real estate is no longer needed for University purposes and it would be in the best interests of the University to sell said real estate at this time.

BE IT THEREFORE RESOLVED: That the real estate be and it is declared to be no longer needed by the University for any of the purposes of the University and that it would be advantageous to sell and convey the same for no less than the full appraised value;

BE IT FURTHER RESOLVED, That a copy of this resolution duly certified be delivered to The Governor of The State of Indiana with a request that three (3) disinterested appraisers be appointed to appraise said real estate for the purpose of said sale.

BE IT FURTHER RESOLVED, That the University, after receipt of the appraisal from those appraisers appointed by The Governor, advertise said real estate for sale and that said real estate be sold at a price acceptable to the University, but in any event, for not less than the full appraised value.

---

President

ATTEST:

---

Secretary

---

## 5c New Program Music Industry Studies Minor

The Music Industry Studies Minor is a relevant and timely minor that encapsulates interests and course work for students in disciplines other than music. It is musically non-technical (i.e. music theory, applied music) and can be accomplished by those university students with an interest and passion for the music industry. It could enhance the student's marketability and employability in a wide variety of music industry settings.

Housed in the Department of Multidisciplinary Studies, this relevant and timely minor utilizes the expertise of faculty in College of Business and the College of Arts and Sciences to provide exposure and knowledge to the many facets of the music industry while maintaining the flexibility to be complementary to a variety of majors across the University. The professional climate today is such that, with more diversity of experiences and official recognition of qualifications, students have a far better chance to parlay their academic experiences into a wider choice of employment opportunities. Music and musical artists play a key part in the lives of today's students; there is far greater exposure to the "music scene", music is incorporated into forms of protest, healing and politics and is a regular feature in the daily lives of students.

The proposal has been approved by the Dean of the College of Arts and Sciences, Faculty Senate, and has the support of the Provost and Vice President for Academic Affairs.

**RECOMMENDATION:** Approval of the Music Industry Studies Minor effective Fall 2017.

**On a motion by Mr. Taylor, seconded by Ms. Bell, the recommendation was approved.**

---

## 5d Conflict of Interest Disclosure Statements

Indiana law requires public servants to disclose any financial conflicts of interest connected to contracts and purchases of the governmental entity which they serve. In compliance with this law, Indiana State asks all members of the Board of Trustees

along with the president and vice presidents of the university to submit a conflict of interest disclosure statement on an annual basis and/or when these conflicts occur.

**Recommendation:** It is recommended that the Board of Trustees accept the Conflict of Interest Disclosure Statements as submitted by the Board of Trustees, university president and vice presidents.

**On a motion by Mr. Baesler, seconded by Mr. Minas the recommendation was approved.**

---

## 5e Revision of Policy 660.1

Policy 660 was not updated to reflect current practices. The Office of the President and the General Counsel recommend updating the current policy as provided below.

### ~~660.1 Role of University Advancement Office.~~

~~The University President is the official spokesperson in all fund-raising activities. The Vice President for University Advancement, in concert with the other administrative units of the University, will assess University needs, identify possible private sector sources for funds to meet those needs, prepare plans for soliciting private sector funds and direct the personnel and financial resources available toward obtaining resources to meet those needs. All University efforts in private sector fundraising will be coordinated through the University Advancement Office.~~

### 660.1 Fundraising from Private Sources.

The Indiana State University Foundation is a separately incorporated 501(c)(3) and serves as the primary fundraising and resource development entity for Indiana State University. The Foundation is responsible for identifying and nurturing relationships with potential donors and other friends of the University, soliciting cash, securities, real and intellectual property, and other private resources for the support of the University, and acknowledging and stewarding gifts in accordance with donor intent and the Foundation's fiduciary responsibilities.

University employees shall direct all philanthropic gifts to the Foundation for receipt, management, and stewardship.

**Recommendation:** Approve revisions to Policy 660.1.

**On a motion by Ms. Bell, seconded by Mrs. Cabello, the recommendation was approved.**

---

## 5f Resolution to add Item to Agenda

ISU Handbook Policy 226.2 provides that the Board of Trustees may add an item to the agenda that is of such a nature that it should not be deferred until the next meeting by resolution adopted by least two-thirds of the members present. Based upon action by the ISU Foundation Board meeting earlier today, Trustee Chair Dave Campbell requested that an item be added to

the agenda providing authorization for the President of the University and the Chair of the Board to negotiate and execute a Memorandum of Understanding with the ISU Foundation Board.

**On a motion by Mr. Pease, seconded by Ms. Bell, the recommendation was approved.**

---

## **5g Authorization to Negotiate and Execute MOU with the ISU Foundation Board**

The Board of Trustees hereby authorizes the President of the University and the Chair of the Board to negotiate and execute a MOU with the ISU Foundation Board and take such other action as appropriate to implement the restructuring proposed by the Foundation Board. The Board of Trustees further delegates to the President the authority to negotiate amendments to the MOU subject to Board approval.

**Recommendation:** Approval of the authorization to negotiate and executive Memorandum of Understanding with the ISU Foundation Board as described above.

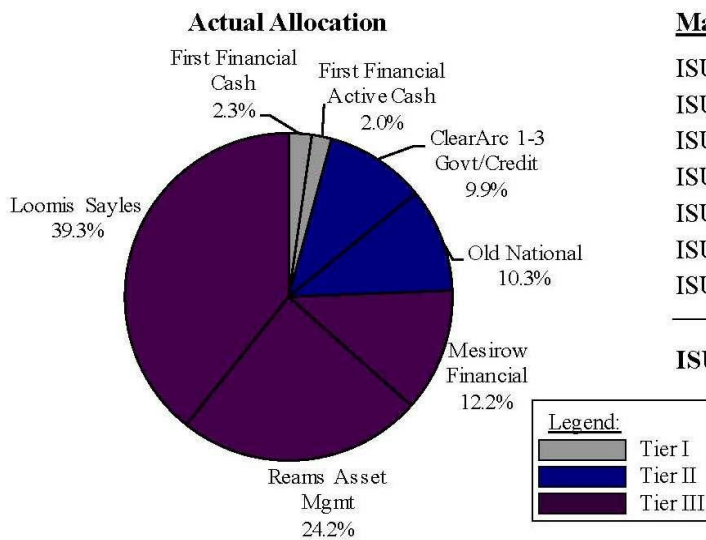
**On a motion by Mr. Pease, seconded by Mrs. Cabello, the recommendation was approved.**

---

## 6a University Investments

In accordance with the Board of Trustees approved investment policy, the University Treasurer is responsible for management and oversight of all investments. The University Treasurer is to provide a quarterly investment performance review of all funds to the Board. Below is the quarterly report for the period ending June 30, 2016.

### Indiana State University Operating Funds Plan Summary Period Ended June 30, 2016



Manager	Market Value
ISU-First Financial Cash	\$3,257,781
ISU-First Fincl. Active Cash	\$2,810,391
ISU-ClearArc	\$14,251,368
ISU-Old National	\$14,760,827
ISU-Mesriow Fincl.	\$17,506,246
ISU-Reams Asset Mgmt.	\$34,783,754
ISU-Loomis Sayles	\$56,488,497
<b>ISU-Total Fund</b>	<b>\$143,858,864</b>

	June 30, 2016 Market Value	% of Total Assets	Target Allocation
<b>Tier I</b>			
First Financial Cash	\$3,257,781	2.3%	\$10mm - \$25mm
First Financial Active Cash	\$2,810,391	2.0%	
	<b>\$6,068,172</b>	<b>4.2%</b>	
<b>Tier II</b>			
ClearArc 1-3 Year Govt/Credit	\$14,251,368	9.9%	\$25mm - \$30mm
Old National Intermediate	\$14,760,827	10.3%	
	<b>\$29,012,195</b>	<b>20.2%</b>	
<b>Tier III</b>			
Mesriow Core Total Return	\$17,506,246	12.2%	Remaining Balance
Reams Asset Management Core	\$34,783,754	24.2%	
Loomis Sayles Core Plus	\$56,488,497	39.3%	
	<b>\$108,778,497</b>	<b>75.6%</b>	
	<b>\$143,858,864</b>	<b>100.0%</b>	

**QUARTERLY CHANGE IN MARKET VALUE BY INVESTMENT MANAGER  
PRIOR QUARTER ENDED JUNE 30, 2016**

	<b>Beginning Market Value</b>	<b>Deposits/ Withdrawals</b>	<b>Investment Gain/Loss</b>	<b>Ending Market Value</b>
ISU-First Financial Cash	\$7,553,921	(\$4,303,103)	\$6,963	\$3,257,781
ISU-First Fincl. Active Cash	\$6,103,544	(\$3,302,526)	\$9,372	\$2,810,391
ISU-ClearArc	\$14,157,532	(\$6,287)	\$100,124	\$14,251,368
ISU-Old National	\$14,859,654	(\$308,609)	\$209,782	\$14,760,827
ISU-Mesirow Fincl.	\$17,114,466	(\$15,624)	\$407,405	\$17,506,246
ISU-Reams Asset Mgmt.	\$36,110,135	(\$2,031,212)	\$704,831	\$34,783,754
ISU-Loomis Sayles	\$54,775,144	(\$51,686)	\$1,765,039	\$56,488,497
<b>ISU-Total Fund</b>	<b>\$150,674,396</b>	<b>(\$10,019,047)</b>	<b>\$3,203,514</b>	<b>\$143,858,864</b>

**CHANGE IN MARKET VALUE BY INVESTMENT MANAGER  
FISCAL YEAR TO DATE ENDED JUNE 30, 2016**

	<b>Beginning Market Value</b>	<b>Deposits/ Withdrawals</b>	<b>Investment Gain/Loss</b>	<b>Ending Market Value</b>
ISU-First Financial Cash	\$7,554,033	(\$4,307,017)	\$10,766	\$3,257,781
ISU-First Fincl. Active Cash	\$6,090,877	(\$3,308,594)	\$28,108	\$2,810,391
ISU-ClearArc	\$14,001,830	(\$25,236)	\$274,774	\$14,251,368
ISU-Old National	\$14,389,358	(\$334,012)	\$705,481	\$14,760,827
ISU-Mesirow Fincl.	\$16,557,923	(\$62,087)	\$1,010,410	\$17,506,246
ISU-Reams Asset Mgmt.	\$34,774,970	(\$2,122,519)	\$2,131,304	\$34,783,754
ISU-Loomis Sayles	\$54,650,978	(\$206,275)	\$2,043,794	\$56,488,497
<b>ISU-Total Fund</b>	<b>\$148,019,969</b>	<b>(\$10,365,740)</b>	<b>\$6,204,635</b>	<b>\$143,858,864</b>

## INVESTMENT MANAGER RETURNS

The table below details the rates of return for the investment managers over various time periods. Negative returns are shown in red, positive returns in black. Returns for one year or greater are annualized.

**Returns for Periods Ended June 30, 2016**

**Inception Date: October 1, 2010**

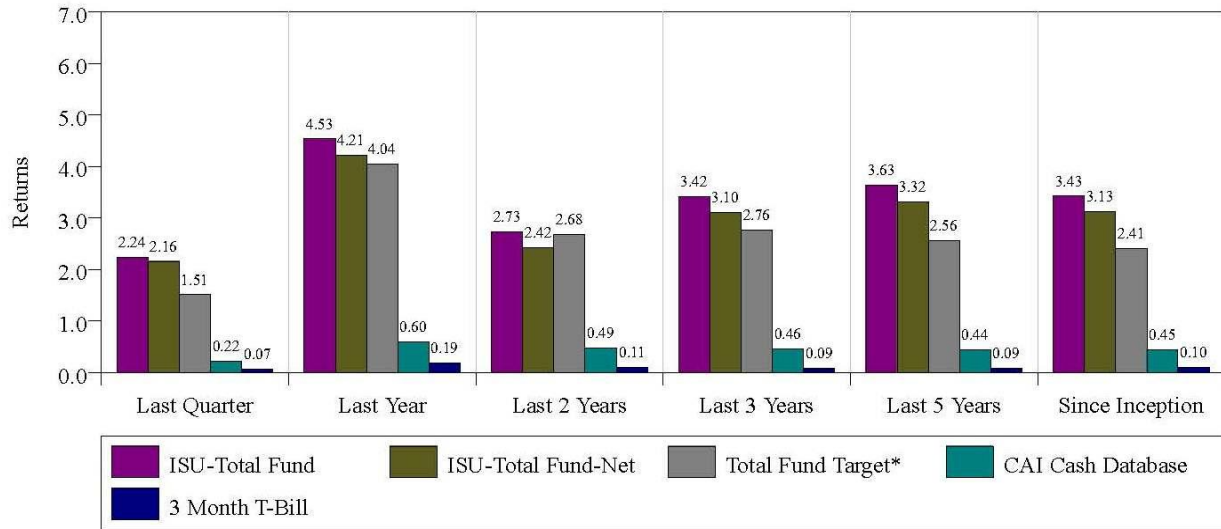
	<b>Last Quarter</b>	<b>Last Year</b>	<b>Last 2 Years</b>	<b>Last 3 Years</b>	<b>Last 5 Years</b>	<b>Since Inception</b>
<b>ISU-Tier 1</b>	<b>0.17</b>	<b>0.46</b>	<b>0.43</b>	<b>0.39</b>	<b>0.40</b>	<b>0.40</b>
ISU-First Financial Cash	0.13	0.25	0.26	0.24	0.26	0.26
3 Month T-Bill	0.07	0.19	0.11	0.09	0.09	0.10
ISU-First Fincl. Active Cash	0.21	0.58	0.55	0.55	0.59	0.61
Citigroup:US Treas 1 Yr	0.33	0.63	0.47	0.41	0.38	0.40
<b>ISU-Tier 2</b>	<b>1.07</b>	<b>3.43</b>	<b>2.48</b>	<b>2.41</b>	<b>2.21</b>	<b>2.11</b>
ISU-ClearArc	0.71	1.97	1.49	1.47	1.32	1.36
ClearArc:1-3 Yr G/C Comp	0.67	1.72	1.36	1.39	1.32	1.38
Barclays:Gov/Credit 1-3	0.67	1.59	1.26	1.22	1.10	1.13
ISU-Old National	1.41	4.85	3.44	3.32	3.08	2.85
Old Nat'l: Inter Comp	1.45	4.93	3.59	3.58	3.28	3.00
Barclays:Gov/Credit Inter	1.59	4.33	3.00	2.95	2.90	2.69
<b>ISU-Tier 3</b>	<b>2.72</b>	<b>5.30</b>	<b>3.06</b>	<b>4.27</b>	<b>4.77</b>	<b>4.61</b>
ISU-Mesirow Fincl.	2.38	6.12	3.75	4.22	4.04	3.74
Mesirow:Core Comp	2.42	6.05	3.86	4.28	4.16	3.85
Barclays:Aggregate Index	2.21	6.00	3.91	4.06	3.76	3.51
ISU-Reams Asset Mgmt.	1.79	6.16	4.04	3.82	4.25	4.04
Reams:Core Comp	1.98	6.23	3.81	3.66	4.23	4.02
Barclays:Aggregate Index	2.21	6.00	3.91	4.06	3.76	3.51
ISU-Loomis Sayles	3.43	4.49	2.23	4.58	5.35	5.25
Loomis:Core Plus Comp	3.33	4.37	2.25	4.57	5.21	5.21
Barclays:Aggregate Index	2.21	6.00	3.91	4.06	3.76	3.51
<b>ISU-Total Fund</b>	<b>2.24</b>	<b>4.53</b>	<b>2.73</b>	<b>3.42</b>	<b>3.63</b>	<b>3.43</b>
<b>ISU-Total Fund-Net</b>	<b>2.16</b>	<b>4.21</b>	<b>2.42</b>	<b>3.10</b>	<b>3.32</b>	<b>3.13</b>
<b>Total Fund Target*</b>	<b>1.51</b>	<b>4.04</b>	<b>2.68</b>	<b>2.76</b>	<b>2.56</b>	<b>2.41</b>

Total Fund Target\* = 19% 90 Day T-Bill, 19% Barclays Govt/Credit 1-3 Year Index, 62% Barclays Aggregate Index

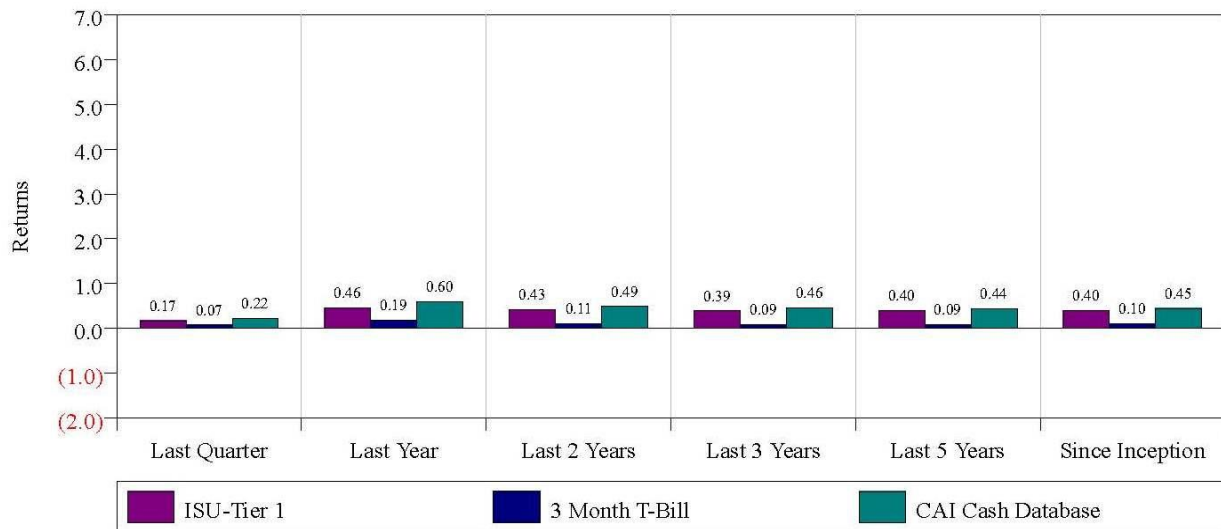
**RETURN SUMMARY**  
**PERIOD ENDED JUNE 30, 2016**

**Total Fund Performance**  
 The charts below show the Fund's performance by tier over various time periods versus the appropriate benchmark and peer group.

ISU Total Fund Returns  
 for Various Time Periods  
 Current Quarter Ending June 30, 2016  
 Inception Date: October 1, 2010



ISU Tier 1 Returns  
 for Various Time Periods  
 Current Quarter Ending June 30, 2016  
 Inception Date: October 1, 2010



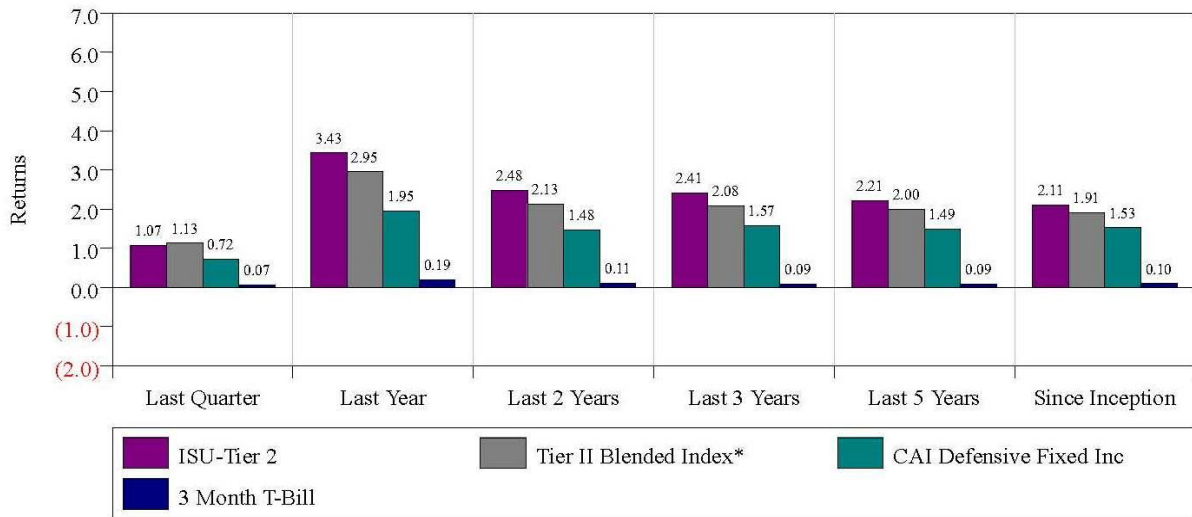


**RETURN SUMMARY**  
**PERIOD ENDED JUNE 30, 2016**

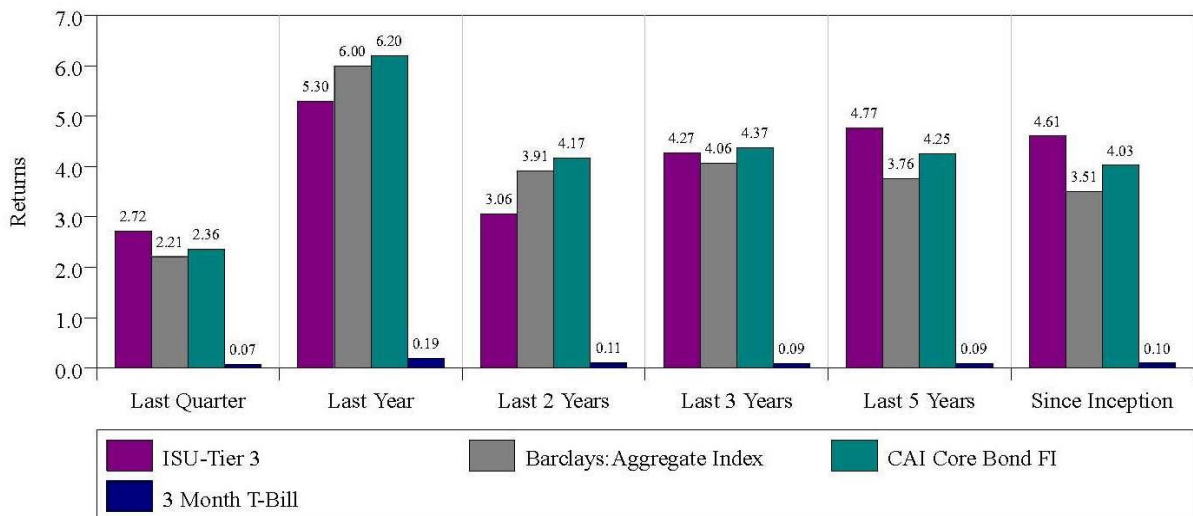
**Total Fund Performance**

The charts below show the Fund's performance by tier over various time periods versus the appropriate benchmark and peer group.

ISU Tier 2 Returns  
for Various Time Periods  
Current Quarter Ending June 30, 2016  
Inception Date: October 1, 2010



ISU Tier 3 Returns  
for Various Time Periods  
Current Quarter Ending June 30, 2016  
Inception Date: October 1, 2010



Tier II Blended Index\* = 50% Barclays Govt/Credit 1-3 Year Index, 50% Barclays Govt/Credit Intermediate Index

# 6b Financial Report

INDIANA STATE UNIVERSITY							
GENERAL FUND OPERATING BUDGET REVENUE AND EXPENSE SUMMARY							
For the Period Ending June 30, 2016							
	2015-16	2015-16	YTD	Percent	2014-15	YTD	Percent
	Base	Adjusted	through	of	Adjusted	through	of
	Budget	Budget	6/30/16*	Adjusted	Budget	6/30/15*	Adjusted
				Budget			Budget
<b>Revenues</b>							
State Appropriations							
Operational	\$ 66,194,030	\$ 66,194,030	\$ 66,194,030	100.0%	\$ 67,308,231	\$ 67,308,231	100.0%
Debt Service Appropriation	7,530,475	7,530,475	7,541,022	100.1%	8,489,497	8,501,442	100.1%
Sub-Total State Appropriations	73,724,505	73,724,505	73,735,052		75,797,728	75,809,673	
Student Tuition	91,035,303	91,068,303	93,597,841	102.8%	79,515,713	88,549,348	111.4%
Other Fees and Charges	1,210,500	1,211,938	1,726,901	142.5%	1,212,314	1,705,475	140.7%
Other Income	5,140,692	5,141,292	5,183,201	100.8%	5,001,345	5,101,433	102.0%
<b>Total Budgeted Revenue</b>	<b>\$ 171,111,000</b>	<b>\$ 171,146,038</b>	<b>\$ 174,242,995</b>		<b>\$ 161,527,100</b>	<b>\$ 171,165,929</b>	
Encumbrances and Carryforward		14,202,588	14,202,588		10,044,186	10,044,186	
Reimbursements and Income Reappropriated From Other Sources		8,130,774	8,130,774		6,835,295	6,835,295	
<b>Total Revenues</b>	<b>\$ 171,111,000</b>	<b>\$ 193,479,400</b>	<b>\$ 196,576,357</b>	<b>101.6%</b>	<b>\$ 178,406,581</b>	<b>\$ 188,045,410</b>	<b>105.4%</b>
<b>Expenditures</b>							
Compensation							
Salaries and Wages	\$ 83,859,375	\$ 88,218,537	\$ 87,106,321	98.7%	\$ 83,228,750	\$ 82,169,193	98.7%
Fringe Benefits	25,901,789	26,315,118	26,306,095	100.0%	25,874,967	25,863,677	100.0%
Sub-Total Compensation	109,761,164	114,533,655	113,412,416	99.0%	109,103,717	108,032,870	99.0%
Departmental Expenses							
Supplies and Related Expenses	17,038,997	\$ 24,592,264	\$ 18,278,440	74.3%	\$ 21,505,222	\$ 16,337,488	76.0%
Repairs and Maintenance	4,186,697	7,880,891	7,649,776	97.1%	6,479,500	5,957,221	91.9%
Other Committed Expenses	1,160,348	1,164,830	1,164,830	100.0%	1,146,258	1,146,258	100.0%
Sub-Total Departmental Expenses	22,386,042	33,637,985	27,093,046	80.5%	29,130,980	23,440,967	80.5%
Utilities and Related Expenses	10,814,399	8,951,643	8,951,643	100.0%	9,972,496	9,972,496	100.0%
Equipment and Other Capital							
Library Acquisitions	1,610,729	1,520,519	1,502,540	98.8%	1,770,738	1,676,241	94.7%
Operating Equipment	1,449,072	2,329,968	595,000	25.5%	2,097,718	919,106	43.8%
Capital Improvements	3,750,000	7,713,237	6,031,974	78.2%	5,825,285	2,109,175	36.2%
Sub-Total Equipment & Other Capital	6,809,801	11,563,724	8,129,514	70.3%	9,693,741	4,704,522	48.5%
Student Scholarship and Fee Remissions	13,118,844	15,569,406	15,569,106	100.0%	13,814,866	13,814,866	100.0%
Laptop Scholarship Program	1,415,000	1,562,290	1,562,290	100.0%	1,576,524	1,483,998	94.1%
Reserve for Strategic Initiatives	2,050,000	326,527	326,527	0.0%	234,890	234,890	0.0%
Budgeted Reserve	4,755,750	4,755,750	4,755,750	0.0%	-	-	0.0%
Transfers Out		5,675,377	5,596,965	98.6%	14,518,196	12,518,196	86.2%
<b>Total Expenditures</b>	<b>\$171,111,000</b>	<b>\$ 196,576,357</b>	<b>\$185,397,257</b>	<b>94.3%</b>	<b>\$188,045,410</b>	<b>\$174,202,805</b>	<b>92.6%</b>
*Includes encumbrances and open commitments							

## **Revenues**

### Student Tuition

Student tuition for FY16 was above budget by \$2,529,538 inclusive of a 1.9 percent increase in tuition for the 2015-16 academic year. The budget for student tuition represented 100% average of the previous two Fall semesters.

### Other Fees and Charges

Other Fees and Charges increased by \$21,426 as a result of growth in collection and deferment fees. This partially offsets lower amounts of life exam credit fees that are being phased out.

### Other Income

Other Income was ahead of last year's total by \$81,768 due to an additional \$157,500 of utility reimbursement from Residential Life offset by reduction in indirect cost recovery on grants and contracts.

### Reimbursements and Income Reappropriated from Other Sources

Reimbursements and Income Reappropriated from Other Sources reflects an increase of \$1,295,479 over the prior year. Included in this increase is funding related to the upgrade of IT fiber throughout campus, additional marketing support, close out of capital improvement renovation funds, and increased program fees.

## **Expenses**

### Compensation

Compensation is above last year's amount by \$5,379,846 as instructional salaries, administrative salaries, student wages and graduate assistant expense are up \$3,124,105, \$499,218, \$201,123 and \$356,637, respectively. Fringe benefits reflect an increase in medical expense for active employees offset by an increase from 50 percent to 75 percent reimbursement of retiree medical expenses from the VEBA trust.

### Departmental Expenses

Departmental Expenses include an increase of \$1,940,952 in Supplies and Related Expenses. This is a result of a difference in increases in advertising expenses, accounting services, office supplies, travel expenses, and bad debt expense. Repairs and Maintenance reflects an increase of \$1,692,555 over the prior year. The majority of this amount is a result of expenses related to upgrading IT fiber in various campus buildings.

### Equipment and Other Capital

Equipment and Other Capital shows \$6,031,974 of capital improvements transfers that include improvements to the Science Building corridors, additional chiller capacity for the satellite chilled water plant, Gillum Hall 2<sup>nd</sup> floor renovation, fire alarms upgrades, utility tunnel repairs, Gillum Hall roof, and African American Cultural Center renovation.

### Utilities and Related Expenses

Utilities and Related Expenses has a reduction of \$1,020,853 that reflects reduced electricity usage, lower water usage costs, and reduction of natural gas costs.

### Student Scholarship and Fee Remissions

Student Scholarship and Fee Remissions and the Laptop scholarship program shows increases of \$1,754,240 and \$78,292 to reflect enrollment growth.

### Reserve for Strategic Initiatives

Of the \$2,050,000 base budget for strategic initiatives, \$1,723,473 was transferred to other budget lines to base fund

various strategic initiatives of the 2009 strategic plan. The remaining \$326,527 was transferred as one-time funding for strategic plan investments.

Budgeted Reserve

For FY16 a budget reserve of 3 percent of the FY15 general fund operating budget was established. These funds were transferred to University operating and capital reserves.

---

## 6c Purchasing Report

### Purchase Order Activity for Period August 11, 2016 to September 18, 2016

#### Purchases Over

**\$50,000**

#### Sole Source, Works With Already Existing Equipment

Rixan	P0080		
Association	54	Robots for Electronics &	\$94,646.
Inc.	2	Computer Tech	28

#### Solicited 29 Bids, Received Only 1 Bid

Wabash Valley	P0080		
Asphalt Co	44		\$493,73
LLC	2	Construction of Parking Lot	2.00

## 6d Vendors Report

The following vendors have accumulated purchases from the University for the time period July 1, 2016 through August 31, 2016 (Fiscal Year) in excess of \$250,000:		
Rural Health Innovation Collaborative	\$ 268,697	Partner Contribution for Simulation Center Operational Expenses
Sodexo Inc and Affiliates	\$ 281,724	Dining and Catering Services
Butler Woodcrafters Inc	\$ 287,056	Blumberg Hall Case Goods
Evan and Ryan Electrical Contractors	\$ 291,632	African American Cultural Center and Gillum Hall 2nd Floor Renovations
Ratio Architects Inc	\$ 321,267	College of HHS Renovation and Hulman Center Renovation
Blakley Corporation	\$ 327,302	Hines and Jones Masonry Restoration
Office Works	\$ 343,053	Blumberg Hall Case Goods
AmWins/NEBCO Group Benefits	\$ 348,339	Retiree Insurance Coverage
Lenovo Inc	\$ 355,386	Computer Equipment Purchases
ONI Risk Partners Inc	\$ 399,745	Athletic Medical, Flight Academy, and Workers Compensation Insurance Policies
Medco Health Solutions	\$ 630,986	Prescription Drug Coverage
TIAA CREF	\$ 1,008,693	Retirement Contributions
Duke Energy	\$ 1,111,497	Electricity Utility Payments
Technology Integration Group	\$ 1,787,170	Computer Equipment Purchases (Laptop Scholarships)
CIGNA Health Care	\$ 2,615,754	Medical Claim Payments
Hannig Construction Inc	\$ 4,279,069	Blumberg Hall Renovation, Cromwell Hall Renovation, Science Lab Renovations

## 6e Faculty Personnel

### FACULTY

#### Instructor Appointments of 2-5 Years – 2015-2016 Academic Year

(Effective August 1, 2016 unless otherwise noted)

Jack Bonham; Instructor, Department of English; M.A., Indiana State University; salary \$37,638 per academic year.  
Bradley Brubaker; Instructor, Department of Psychology; Ph.D., University of Wisconsin-Milwaukee; salary \$52,275 per academic year.

Harry Gallatin; Instructor, Department of Accounting, Finance, Insurance, and Risk Management; M.B.A., Indiana State University; salary \$43,911 per academic year.

Jami Higdon; Instructor, Department of Aviation Technology; M.P.A., Indiana State University; salary \$55,000 per academic year.

Jennifer Holmes; Instructor, Department of Baccalaureate Nursing; M.S.N., Ball State University; salary \$48,000 per academic year.

Aimee Jacobs; Instructor, Department of Management, Information Systems, and Business Education; Ph.D., University of Reading; salary \$62,000 per academic year.

Debra Knaebel; Instructor, Department of Teaching and Learning; Ph.D., Indiana State University; salary \$52,275 per academic year.

Bobbie Jo Monahan; Instructor, Department of Educational Leadership; Ph.D., Indiana State University; salary \$57,503 per academic year.

Keith Perry; Instructor, Department of Built Environment; M.S., Indiana State University; salary \$61,000 per academic year.

Cassandra Caruso-Woolard; Instructor, Department of Teaching and Learning; M.A., Indiana State University; salary \$52,275.

### **Full-Time Appointments – 2015-2016 Academic Year**

(Effective August 1, 2016 through May 31, 2017, unless otherwise noted)

Jason Brown; Full-Time Lecturer, Department of Aviation Technology; B.S., Indiana State University; salary \$56,100 per academic year.

Alberto Friedmann; Full-Time Lecturer, Department of Kinesiology, Recreation, and Sport; Ph.D., University of Missouri-St. Louis; salary \$53,000 per academic year.

Johnathon Gerber; Full-Time Lecturer, Department of Political Science; Ph.D., Washington State University; salary \$37,500 per academic year.

Jasmine Haywood; Full-Time Lecturer, Department of Educational Leadership; M.S., Indiana University; salary \$50,000 per academic year.

Chad Roseland; Full-Time Lecturer, School of Music; M.M., University of Arizona; salary \$36,593 per academic year.

Riem Rostom; Full-Time Lecturer, Department of Applied Engineering and Technology Management; Ph.D., North Carolina A&T State University; salary \$55,000 per academic year.

Harold Seifers; Full-Time Lecturer, Department of Electronics and Computer Engineering Technology; M.S., Indiana State University; salary \$52,275 per academic year.

David Silvey; Full-Time Lecturer, Dean, College of Technology; M.S., Miami University; salary \$47,754 per academic year.

### **Temporary Part-Time Appointments – 2016 Fall Semester**

(Effective August 1, 2016 unless otherwise noted)

Anita Adams; Part-Time Lecturer, Department of Human Resource Development and Performance Technologies; M.S., Indiana State University; three hours; salary \$3,840.

Eric Anderson; Part-Time Lecturer, Department of Multidisciplinary Studies; M.S., University of Waterloo, Ontario; three hours; salary \$3,120.

Brandi Andreae; Part-Time Lecturer, Department of Applied Medicine and Rehabilitation; M.S., IUPUI; four hours; salary \$5,000.

James Archer; Part-Time Lecturer, Department of Criminology and Criminal Justice; M.S., Indiana State University; nine hours; salary \$9,790.

Stephen Baldwin; Part-Time Lecturer, Department of Built Environment; M.B.A., Liberty University; six hours; salary \$7,344.

Michael Ball; Part-Time Lecturer, Department of Aviation Technology; Masters of Aviation, Embry-Riddle Aeronautical University; three hours; salary \$3,184.

Jeremy Bennett; Part-Time Lecturer, Department of Political Science; M.A., Seton Hall University; three hours; salary \$3,327.

Glenn Blackstone; Part-Time Lecturer, Department of Criminology and Criminal Justice; M.A., Kent State University; six hours; salary \$6,527.

Patricia Bollinger; Part-Time Lecturer, Department of Biology; M.S., Cornell University; one hour; salary \$1,000.

Tevis Boulware; Part-Time Lecturer, Department of Mathematics and Computer Science; M.S., University of Oregon and Air Force Institute of Technology; three hours; salary \$3,000.

Shane Bouman; Part-Time Lecturer, Department of Kinesiology, Recreation, and Sport; B.S., South Dakota State University; two hours; salary \$2,000.

Charles Bridges; Part-Time Lecturer, Department of Criminology and Criminal Justice; J.D., Indiana University; six hours; salary \$6,527.

Terri Brown; Part-Time Lecturer, Department of Advanced Practice Nursing; D.N.P., IUPUI; three hours; salary \$7,500.

Robert Burton; Student Teacher Supervisor, Education Student Services; M.S., Indiana State University; Supervise four students; salary \$2,596.

Teresa Byers; Part-Time Lecturer, School of Music; M.Ed., Indiana State University; three hours; salary \$3,137.

Cory Campbell; Part-Time Lecturer, Department of Management, Information Systems, and Business Education; M.B.A., Eastern Illinois University; two hours; salary \$2,091.

Tiffany Chaille; Part-Time Lecturer, Department of Baccalaureate Nursing; M.S.N., Indiana University; two hours; salary \$4,600.

David Chambers; Part-Time Lecturer, Department Criminology and Criminal Justices; M.S., Indiana State University; three hours; salary \$3,122.

Mihir Chatterji; Part-Time Lecturer, Department of Aviation Technology; M.S., Indiana State University; three hours; salary \$3,000.

Nicole Christlieb; Part-Time Lecturer, Department of Political Science; M.P.A., Indiana State University; three hours; salary \$3,327.

Ellen Clark; Student Teacher Supervisor, Education Student Services; M.S., Indiana University; supervise three students; salary \$1,818.

Sara Collins; Part-Time Lecturer, Department of Social Work; M.S.W., University of Southern Indiana; three hours; salary \$3,000.

Joanna Connors; Part-Time Lecturer, Department of Human Resource Development and Performance Technology; M.S., Indiana State University; six hours; salary \$7,680.

Valerie Craig; Part-Time Lecturer, University College; N.S., Indiana State University; three hours; salary \$3,183.

Terry Crowe; Student Teacher Supervisor, Education Student Services; M.S., Purdue University; supervise three students; salary \$1,818.

Dan Curless; Student Teacher Supervisor, Education Student Services; M.S., St. Francis College; supervise two students; salary \$1,212.

Frances D'Andrea; Part-Time Lecturer, Department of Teaching and Learning; Ph.D., University of Pittsburgh; three hours; salary \$4,266.

Kaitlin Diel; Part-Time Lecturer, Department of Management, Information Systems, and Business Education; M.B.A., Indiana State University; three hours; salary \$3,000.

Flint Dollar; Part-Time Lecturer, School of Music; M.M., Mercer University; three hours; salary \$3,000.

Justin Doss; Part-Time Lecturer, School of Music; Ph.D., University of Missouri, Kansas City; three hours; salary \$3,000.

Vicki Duncan; Student Teacher Supervisor, Education Student Services; M.S., Western Kentucky University; supervise two students; salary \$1,212.

Julie Edwards; Part-Time Lecturer, School of Music; M.M., University of North Carolina; five hours; salary \$5,333.

Margaret Erthal; Part-Time Lecturer, Department of Management, Information Systems, and Business Education; Ph.D., Southern Illinois University; three hours; salary \$4,080.

Roseanne Fairchild; Part-Time Lecturer, Department of Advanced Practice Nursing; Ph.D., Indiana University; six hours; salary \$15,000.

Robert Farrington; Part-Time Lecturer, Department of Electronics and Computer Engineering Technology; M.S., Indiana State University; six hours; salary \$7,638.

Deborah Flurkey; Part-Time Lecturer, Department of Teaching and Learning; M.Ed., Clemson University; nine hours; salary \$11,475.

Lynn Foster; Part-Time Lecturer, Department of Human Resource Development and Performance Technologies; Ph.D., Capella University; three hours; salary \$3,840.

Leslie Gackle; Part-Time Lecturer, Department of Human Resource Development and Performance Technologies; M.S., Indiana State University; three hours; salary \$3,840.



Christian Gallagher; Part-Time Lecturer, Department of Criminology and Criminal Justice; Ph.D., Indiana State University; nine hours; salary \$9,790.

Elizabeth Gavin; Part-Time Lecturer, Department of Psychology; M.S., Indiana State University; three hours; salary \$3,123.

Mary Griffy; Part-Time Lecturer, Department of Human Resource Development and Performance Technologies; M.S., Indiana State University; three hours; salary \$3,840.

Mitchell Hannahs; Part-Time Lecturer, Department of Kinesiology, Recreation, and Sport; M.S., Indiana State University; two hours; salary \$2,000.

Karla Hansen-Speer; Part-Time Lecturer, Department of Biology; A.M., Washington University; three hours; salary \$3,000.

Karina Hanson; Part-Time Lecturer, Department of Languages, Literatures, and Linguistics; M.A., Purdue University; three hours; salary \$3,187.

David Harris; Student Teacher Supervisor, Education Student Services; M.S., Indiana State University; supervise five students; salary \$3,245.

Steven Harris; Part-Time Lecturer, Department of Multidisciplinary Studies; Ph.D., Indiana University; six hours; salary \$7,038.

Tara Heglund; Part-Time Lecturer, Department of Baccalaureate Nursing Completion; M.S., Indiana State University; 1.5 hours; salary \$3,300.

Douglas Hiatt; Part-Time Lecturer, Department of Electronics Computer Engineering Technology; Ph.D., Indiana Institute of Technology; three hours; salary \$3,819.

Keith Hoover; Part-Time Lecturer, Department of Electronics and Computer Engineering Technology; Ph.D., University of Illinois; six hours; salary \$7,638.

Stacy Horn; Part-Time Lecturer, Department of Baccalaureate Nursing; M.S., Indiana State University; one hour; salary \$2,300.

James Houston; Part-Time Lecturer, Department of Criminology and Criminal Justice; M.S., Indiana State University; three hours; salary \$3,264.

Cherie Howk; Part-Time Lecturer, Department of Advanced Practice Nursing; Ph.D., Rush University; one hour; salary \$2,500.

Pei-Yi Hu; Part-Time Lecturer, Department of Management, Information Systems, and Business Education; M.B.A., Indiana State University; three hours; salary \$3,000.

Robert Huckabee; Part-Time Lecturer, Department of Criminology and Criminal Justice; Ph.D., Sam Houston State University; three hours; salary \$3,264.

Bethany Hutchins; Part-Time Lecturer, Department of Criminology and Criminal Justice; M.S., Indiana State University; six hours; salary \$6,243.

Jianling Jiang; Part-Time Lecturer, Department of Electronics and Computer Engineering Technology; Ph.D., Indiana State University; six hours; salary \$7,638.

Richard Jinbo; Assistant Professor Emeritus, Department of Electronics and Computer Engineering Technology; M.Ed., Bowling Green State University; six hours; salary \$7,638.

Sandra Kassis; Student Teacher Supervisor, Education Student Services; M.S., Indiana State University; supervise three students; salary \$1,947.

David Kelty; Part-Time Lecturer, Department of English; M.Ed., Indiana State University; three hours; salary \$3,186.

Leslie A. King; Part-Time Lecturer, Department of Electronics and Computer Engineering Technology; M.S., Indiana State University; three hours; salary \$3,819.

Leslie R. King; Part-Time Lecturer, Department of Human Resource Development and Performance Technologies; M.P.A., Indiana State University; three hours; salary \$3,840.

Kara Kish; Part-Time Lecturer, Department of Kinesiology, Recreation, and Sport; B.S., Indiana State University; three hours; salary \$3,264.

Michael Langevin; Part-Time Lecturer, Department of Educational Leadership; Ph.D., Indiana State University; three hours; salary \$4,001.

Ashley Layman; Part-Time Lecturer, Department of Management, Information Systems, and Business Education; M.B.A., Indiana State University; three hours; salary \$3,000.

Gregory Lechner; Part-Time Lecturer, Department of Electronics and Computer Engineering Technology; M.S., Indiana State University; three hours; salary \$3,819.

Carrie Lewis; Part-Time Lecturer, Department of Psychology; M.S., Indiana State University; three hours; salary \$3,123.

Hongtao Li; Part-Time Lecturer, Department of Applied Medicine and Rehabilitation; Ph.D., Indiana State University; three hours; salary \$6,000.

Yuetong Lin; Part-Time Lecturer, Department of Electronics Computer Engineering Technology; Ph.D., University of Arizona; three hours; salary \$3,819.

Susan Livingston; Part-Time Lecturer, Department of Multidisciplinary Studies; M.A., University of Illinois at Urbana-Champaign; six hours; salary \$6,120.

Erica Mandsager; Part-Time Lecturer, Department of Advanced Practice Nursing; M.S.N., Indiana State University; three hours; salary \$7,500.

Amy McCalister; Part-Time Lecturer, Department of Baccalaureate Nursing; M.S., Indiana State University; two hours; salary \$4,692.

Constance McLaren; Professor Emerita, Department of Marketing and Operations; Ph.D., Purdue University; three hours; salary \$5,001.

Jeffery McNabb; Part-Time Lecturer, Department of Aviation; Ph.D., Indiana State University; three hours; salary \$3,744.

Ann McNeill; Part-Time Lecturer, Department of Advanced Practice Nursing; M.S., Indiana State University; five hours; salary \$12,500.

Julie McNichols; Part-Time Lecturer, Department of Teaching and Learning; M.S., Indiana State University; three hours; salary \$3,375.

Candice Milam; Part-Time Lecturer, Department of Human Resource Development and Performance Technologies; M.S., Indiana State University; three hours; salary \$3,840.

Blayne Miley; Part-Time Lecturer, Department of Advanced Practice Nursing; J.D., Georgetown University; 1.5 hours; salary \$3,750.

Sherryn Miley; Student Teacher Supervisor, Education Student Services; M.S., Indiana University; supervise four students; salary \$2,424.

Mark Miller; Student Teacher Supervisor, Education Student Services; M.S., Indiana State University; Supervise five students; salary \$3,030.

Jana Mishler; Part-Time Lecturer, Department of Social Work; M.S.W., University of Southern Indiana; seven hours; salary \$7,000.

Beatrice Momanyi; Part-Time Lecturer, Department of Human Resource Development and Performance Technologies; M.S., Indiana State University; three hours; salary \$3,840.

Sara Monday; Part-Time Lecturer, Department of Human Resource Development and Performance Technologies; M.S., Indiana State University; three hours; salary \$3,840.

Stephen Moore; Part-Time Lecturer, Center for Science Education; M.S., Indiana State University; eight hours; salary \$8,160; Student Teacher Supervisor, Education Student Services, supervise four students; salary \$2,424.

Teresa Moore; Part-Time Lecturer, Department of Baccalaureate Nursing; M.S., Indiana State University; 3.5 hours; salary \$8,544.

Matthew Morgan; Part-Time Lecturer, Department of Criminology and Criminal Justice; M.S., Indiana State University; three hours; salary \$3,264.

Sarah Mullican; Part-Time Lecturer, Department of Political Science; J.D., Valparaiso University; three hours; salary \$3,792.

Angela Napier; Part-Time Lecturer, Department of Social Work; Ph.D., University of Louisville; two hours; salary \$2,000.

Timothy Payne; Student Teacher Supervisor, Education Student Services; M.S., Indiana University; supervise one student; salary \$606.

Eloise Pitt; Part-Time Lecturer, Department of Criminology and Criminal Justice; M.P.H., Kentucky University; three hours; \$3,264.

Jody Pomfret; Part-Time Lecturer, Department of Social Work; M.S.W., IUPUI; three hours; salary \$3,000.

Kathryn Pommier; Part-Time Lecturer, Department of Kinesiology, Recreation, and Sport; M.A. Eastern Illinois University; three hours; \$3,215.

Linda Potts; Part-Time Lecturer, Department of English; M.A., Indiana State University; three hours; salary \$3,000.

Daniel Powers; Part-Time Lecturer, School of Music; M.M., Indiana University; four hours; salary \$4,267.

Larry Pritchett; Part-Time Lecturer, Department of Electronics and Computer Engineering Technology; B.S., University of Wisconsin, Milwaukee; six hours; salary \$7,638.

Ashley Raney; Part-Time Lecturer, Department of Social Work; M.S.W., IUPUI; three hours; salary \$3,000.

Traci Ray; Part-Time Lecturer, Department of Applied Health Sciences; M.S., Indiana State University; five hours; salary \$6,375.

Tonya Sawyer; Part-Time Lecturer, Department of Kinesiology, Recreation, and Sport; M.S., Indiana State University; three hours; salary \$3,264.

Harold Schipp; Student Teacher Supervisor, Education Student Services; M.S., Indiana University; supervise one student; salary \$606.

Carolyn Sinnott; Student Teacher Supervisor, Education Student Services; M.S.Ed., Indiana University; supervise one student; salary \$606.

Mary Smith; Part-Time Lecturer, Department of Communication Disorders and Counseling, School, and Educational Psychology; B.S., Indiana State University; three hours; salary \$3,000.

Lisa Stein; Part-Time Lecturer, Department of Human Resource Development and Performance Technologies; M.S., Indiana State University; three hours; salary \$3,840.

Anthony Stenger; Part-Time Lecturer, Department of Political Science; J.D., University of Virginia Law School; six hours; salary \$6,240.

Csilla Stewart; Part-Time Lecturer, Department of Human Resource Development and Performance Technologies; M.S., Indiana State University; three hours; salary \$3,840.

Christine Taylor; Part-Time Lecturer, Department of Mathematics and Computer Science; M.S., Indiana University; three hours; salary \$3,600.

Robin Thoma; Part-Time Lecturer, Department of Teaching and Learning; M.Ed., St. Mary of the Woods College; three hours; salary \$3,375.

Deetta Vance; Part-Time Lecturer, Department of Advanced Practice Nursing; M.S., Indiana State University; 3.66 hours; salary \$9,150.

Millie Vaughn; Student Teacher Supervisor, Education Student Services; Ph.D., Indiana State University; supervise three students; salary \$1,947.

Ann Venable; Part-Time Lecturer, Department of Baccalaureate Nursing; M.S., Indiana State University; four hours; salary \$9,200.

Camille Wallace; Part-Time Lecturer, Department of Human Resource Development and Performance Technologies; M.S., Indiana State University; six hours; salary \$7,680.

James Waugh; Student Teacher Supervisor, Education Student Services; M.S., Indiana State University; supervise three students; salary \$2,271.

Deborah Webster; Part-Time Lecturer, Department of Mathematics and Computer Sciences; M.Ed., Indiana State University; from six hours; salary \$6,366, to nine hours; salary \$9,612.

Tami Weinzapfel-Smith; Part-Time Lecturer, Department of Human Resource Development and Performance Technologies; M.L.D., St. Mary of the Woods; three hours; salary \$3,840.

Joseph Wells; Part-Time Lecturer, Department of Kinesiology, Recreation, and Sport; B.A., Fresno Pacific College; two hours; salary \$2,000.

Shanna White; Part-Time Lecturer, Department of Baccalaureate Nursing; M.S., Indiana State University; two hours; salary \$4,600.

Wanda Wilkey; Part-Time Lecturer, Department of Art and Design; M.F.A., Indiana State University; three hours; salary \$3,198.

Shannon Wood; Student Teacher Supervisor, Education Student Services; M.S., Indiana State University; supervise four students; salary \$2,424.

Christine Woodward; Part-Time Lecturer, Department of Criminology and Criminal Justice; M.S., Ferris State University; three hours; salary \$3,060.

James Wyeth; Part-Time Lecturer, Department of Marketing and Operations; M.B.A., Indiana State University; three hours; salary \$5,228.

Dorothy Yaw; Professor Emerita, Department of Human Resource Development and Performance Technologies; Ph.D., Indiana State University; three hours; salary \$3,840.

Paola Zurita; Part-Time Lecturer, Department of Languages, Literatures, and Linguistics; M.A., University of Northern Iowa; three hours; salary \$3,000.

Randi Zwerner; Part-Time Lecturer, Department of Advanced Practice Nursing; M.S., Indiana State University; seven hours; salary \$8,750.

### **Change of Status and/or Pay Rate**

Stephanie Alexander; Instructor, Department of English; stipend of \$6,000 for additional duties as Faculty Fellow, Office of Information Technology; for the appointment period August 1, 2016 to December 31, 2016.

Azizi Arrington-Bey; Assistant Professor; Department of Built Environment; supplemental instructional stipend of \$3,000 for teaching an additional three hours; for the fall semester of the 2016-2017 academic year.

Matthew Blaszka; Assistant Professor, Department of Kinesiology, Recreation, and Sport; supplemental instructional stipend of \$1,000 for teaching one additional hour; for the fall semester of the 2016-2017 academic year.

Kimberly Bodey; Professor, Department of Kinesiology, Recreation, and Sport; stipend of \$5,390 for additional duties as Institutional Review Board Vice-Chair; for the 2016-2017 academic year.

Elizabeth Brown; Chairperson and Professor, Department of Mathematics and Computer Science; stipend of \$3,000 for additional duties as Faculty Senate Secretary; for the 2016-2017 academic year.

Emanuel Cohen; Instructor; Department of Accounting, Finance, Insurance, and Risk Management; supplemental instructional stipend of \$3,000 for teaching an additional three hours; for the fall semester of the 2016-2017 academic year.

Raymond Contreras; from Instructor and Didactic Coordinator, PA Program, Department of Applied Medicine and Rehabilitation, to Assistant Professor and Didactic Coordinator, PA Program, Department of Applied Medicine and Rehabilitation; salary \$90,000 per fiscal year, prorated from the effective date of August 1, 2016, and coordinator supplement of \$7,500 per fiscal year, prorated from the effective date of August 1, 2016.

Harry Gallatin; Instructor, Department of Accounting, Finance, Insurance, and Risk Management; supplemental instructional stipend of \$3,000 for teaching an additional three hours; for the fall semester of the 2016-2017 academic year.

Claudine Gaston; Instructor, Department of Communication; supplemental instructional stipend of \$3,000 for teaching an additional three hours; for the fall semester of the 2016-2017 academic year.

Roby George; Associate Professor and Director of Bands, School of Music; stipend of \$2,500 for additional duties as Coordinator of Community Semester Events, College of Arts and Sciences; for the 2016-2017 academic year.

Swapan Ghosh; Professor Emeritus, Department of Biology; phased retirement stipend of \$49,552; effective August 1, 2016 through May 31, 2017.

Timothy Hawkins; Professor, Department of History; stipend of \$5,000 for additional duties as Faculty Senate Chair; for the 2016-2017 academic year.

Mary Howard-Hamilton; from Professor, Department of Educational Leadership, to Acting Chairperson and Professor, Department of Educational Leadership; stipend of \$1,500 per month for additional duties as Acting Chairperson; for the fall semester of the 2016-2017 academic year.

Melissa Ketner; Instructor; Department of Social Work; supplemental instructional stipend of \$4,500 for teaching an additional 4.5 hours; for the fall semester of the 2016-2017 academic year.

Jeffrey Kinne; Associate Professor, Department of Mathematics and Computer Science; stipend of \$2,000 per month, prorated for the appointment period, for additional duties as Faculty Fellow – College of Graduate and Professional Studies; for the appointment period of August 1, 2016 through October 15, 2016.

Jolynn Kuhlman; Professor, Department of Kinesiology, Recreation, and Sport; stipend of \$2,000 for additional duties as Program Coordinator – Coaching; for the appointment period of August 1, 2016 to December 31, 2016.

Steven Lamb; from Chairperson and Professor, Department of Accounting, Finance, Insurance, and Risk Management, to Chairperson and Professor, Department of Accounting, Finance, Insurance, and Risk Management, and Interim Chairperson, Department of Marketing and Operations; supplement of \$600 per month for additional duties as Interim Chairperson; for the 2016-2017 academic year.

Christine MacDonald; Professor, Department of Communication Disorders and Counseling, School, and Educational Psychology; stipend of \$2,000 for additional duties as Faculty Senate Vice-Chair; for the 2016-2017 academic year.

Leah Nellis; Associate Professor, Department of Communication Disorders and Counseling, School, and Educational Psychology; stipend of \$14,702 for additional duties as Individualized Education Plan Evaluation and Assessment Specialist, Blumberg Center; for the 2016-2017 academic year.

Shawn Phillips; Professor, Department of Earth and Environmental Systems; supplemental instructional stipend of \$3,000 for teaching an additional three hours; for the fall semester of the 2016-2017 academic year.

Nikk Pilato; Instructor and Director of Athletic Bands, School of Music; supplemental instructional stipend of \$2,500 for teaching an additional 2.5 hours; for the fall semester of the 2016-2017 academic year.

Mandy Reid; Associate Professor, Department of English; supplemental instructional stipend of \$3,000 for teaching an additional three hours; for the fall semester of the 2016-2017 academic year.

Richard Setliff; Full-Time Lecturer, Department of Economics; supplemental instructional stipend of \$3,000 for teaching an additional three hours in the Department of Marketing and Operations; for the fall semester of the 2016-2017 academic year.

Eulsun Seung; Associate Professor, Department of Chemistry and Physics; stipend of \$3,000 for additional duties as Director of the Center for Science Education; for the appointment period of August 1, 2016 to May 31, 2017.

Ashley Stakeman; from Instructor and Clinical Coordinator, PA Program, Department of Applied Medicine and Rehabilitation, to Assistant Professor and Clinical Coordinator, PA Program, Department of Applied Medicine and Rehabilitation; salary \$90,000 per fiscal year, prorated from the effective date of August 1, 2016, and coordinator supplement of \$7,500 per fiscal year, prorated from the effective date of August 1, 2016.

Catherine Steding; Assistant Professor, Department of Biology; supplemental instructional stipend of \$3,000 for teaching an additional three hours; for the fall semester of the 2016-2017 academic year.

Thomas Steiger; Professor, Department of Multidisciplinary Studies and Director for the Center for Research and Creativity; stipend of \$6,000 for additional duties as Chairperson, Institutional Animal Care and Use Committee (IACUC); for the appointment period of August 1, 2016 to May 31, 2017.

Steven Stofferahn; Interim Chairperson and Associate Professor, Department of History; end stipend for additional duties as Faculty Fellow – Center for Community Engagement; effective August 1, 2016.

Debra Vincent; Associate Professor, Department of Advanced Practice Nursing; supplemental instructional stipend of \$1,500 for teaching an additional 1.5 hours; for the fall semester of the 2016-2017 academic year.

Kevin Ward; Instructor, Department of Communication; supplemental instructional stipend of \$3,000 for teaching an additional three hours; for the fall semester of the 2016-2017 academic year.

Bruce Welsh; Assistant Professor; Department of Aviation Technology; supplemental instructional stipend of \$3,000 for teaching an additional three hours; for the fall semester of the 2016-2017 academic year.

Tarek Zaher; Professor, Department of Accounting, Finance, Insurance, and Risk Management; stipend of \$3,000 for additional duties as Coordinator of the SMIFC Conference; for the fall semester of the 2016-2017 academic year.

### **Leave of Absence Without Pay**

M. Affan Badar; Professor, Department of Applied Engineering and Technology Management; for the 2016-2017 academic year.

Xiaofen Zhang; Assistant Professor, Department of Mathematics and Computer Science; effective September 9, 2016.

### **Leave of Absence Changes**

Richard Fitch; Professor, Department of Chemistry and Physics; from the 2016-2017 academic year with 60% pay, to the fall semester of the 2016-2017 academic year with 100% pay.

Debra Israel; Associate Professor, Department of Economics, and Interim Chairperson, Department of Communication; from the spring semester of the 2016-2017 academic year, to the spring semester of the 2017-2018 academic year.

### **Separations**

(Effective May 31, 2016 unless otherwise stated)

Patrick Appiah-Kubi; Assistant Professor, Department of Electronics and Computer Engineering Technology.

Colin Carriker; Assistant Professor, Department of Kinesiology, Recreation, and Sport.

Yuetong Lin; Associate Professor, Department of Electronics and Computer Engineering Technology.

Sharon Robinson; Instructor, Department of Accounting, Finance, Insurance, and Risk Management

---

## **6f Other Personnel**

### **NON-EXEMPT**

#### **Appointments**

Lindsey Hoskins; Early Childhood Assistant Teacher, Early Childhood Education Center; \$11.90/hr; effective August 22, 2016.

David Kachman; Residential Life Office Coordinator, Central Housing; \$16.31/hr; effective September 12, 2016.

William Knauth; Metadata Specialist – INDiPres: Preserving Indiana's Memories – 10 Month Position; \$25.13/hr; effective September 1, 2016.

Denise Love; Administrative Assistant III, Associate Vice President Student Affairs; \$18.00/hr; effective September 1, 2016.



Courtney Prather; Marketing Assistant Requires Reappointment, Communications and Marketing; \$18.98/hr; effective September 19, 2016.

Joshua Weeden; Athletics Assistant, Intercollegiate Athletics; \$16.31/hr; effective August 16, 2016.

### **Separations**

Bonnie Bunch; Office Assistant, Blumberg Center; September 30, 2016.

Caleb Cline; Custodian I, Sandison Housing; effective September 9, 2016.

Rachael Miller; Administrative Assistant I, Student Media; effective August 26, 2016.

Pete Walton; Custodian II, Sandison Housing; effective August 26, 2016.

### **Retirements**

Teresa Evans; Public Safety Records Coordinator, Public Safety; effective November 30, 2016.

Marilyn Heaton; Administrative Assistant I, Career Center; effective August 31, 2016.

Marlene Lu; Office Assistant, Blumberg Center; September 30, 2016.

### **Change in Status and/or Pay Rate**

#### **Promotion**

Gloria Ighile; from Communications Officer, Public Safety; \$18.59/hr to Dispatch Coordinator, Public Safety; \$19.08/hr; effective July 1, 2016.

#### **Transfers**

Jessica Dotson; from Administrative Assistant I, Sycamore Housing; \$13.08/hr to Administrative Assistant I, Central Housing; \$13.08/hr; effective September 10, 2016.

Donna Fagg; from Administrative Assistant I, Central Housing; \$19.06/hr to Administrative Assistant I, Sycamore Housing; \$19.06/hr; effective September 10, 2016.

### **EXEMPT**

#### **Appointments**

Karina Arrambide; Admissions Counselor; Admissions and High School Relations; B.S., University of California-Riverside; salary \$30,750 per fiscal year; prorated from the effective August 8, 2016.

Anthony Bradshaw; Information Center Consultant, Office of Information Technology; B.S., Indiana State University; salary \$35,159 per fiscal year, prorated from the effective date of August 22, 2016.

Kenneth Cleghorn; Information Center Consultant, Office of Information Technology; B.S., Indiana State University; salary \$35,159 per fiscal year, prorated from the effective date of August 8, 2016.

Elizabeth Tuttle; Admissions Counselor; Admissions and High School Relations; B.A., Indiana State University; salary \$30,750 per fiscal year, prorated from the effective date of August 8, 2016.

Lisa Walker; Financial Aid Counselor; Student Financial Aid; B.S., Indiana State University; salary \$29,874 per fiscal year, prorated from the effective date of August 15, 2016.

Sean Washington; Admissions Counselor; Admissions and High School Relations; B.S., Indiana State University; salary \$30,750 per fiscal year, prorated from the effective date of August 8, 2016.

Lisa Winker; Admissions Regional Coordinator-9 months; Admissions and High School Relations; B.A., Eureka College; salary \$35,000 per fiscal year, prorated from the effective date of September 9, 2016 through April 30, 2017.

### **Temporary Appointments**

Kathy Endress; Remedial Math Educator – ten month position, Department of Mathematics and Computer Science; M.S., Indiana State University; salary \$40,000 per ten-month period, prorated from the effective date of August 16, 2016.

Debbie Huckabee; Education Support Coordinator, Student Support Services; M.S., Indiana State University; salary \$41,380 per fiscal year; for the appointment period of September 1, 2016 through August 31, 2017.

Mitsuko Korobkin; Postdoctoral Research Associate – Physics, Department of Chemistry and Physics; Ph.D., Louisiana State University; salary \$47,637 per fiscal year, prorated for the appointment period of September 6, 2016 through June 30, 2017.

JoEllen Ornduff; Student Support Services Adviser, Student Support Services; M.S., Indiana State University; salary \$33,456 per fiscal year; for the appointment period of September 1, 2016 through August 31, 2017.

Seth Payne; Interim Sports Video Manager, Student Media; B.S., Indiana State University; salary \$43,485 per fiscal year, prorated for the appointment period of August 15, 2016 through February 28, 2017.

Allison Vickers; Residential Life Area Coordinator, Sycamore Housing; M.S., New York University; salary \$35,000 per fiscal year, prorated for the appointment period of September 6, 2016 through June 30, 2017.

Thomas Weller; Writing Specialist, Student Support Services; M.A., Indiana State University; salary \$43,428 per fiscal year; effective for the ten-month period of September 1, 2016 through August 31, 2017; no work period of June and July.

Rita Worrall; Student Support Services Director, Student Support Services; Ph.D., Indiana State University; salary \$67,530 per fiscal year; for the appointment period of September 1, 2016 through August 31, 2017.

### **Change of Status**

Susan Guell; Assistant Payroll Manager, Budget, Payroll & Risk Management; change in pay grade; salary \$46,300 per fiscal year, prorated from the effective date of August 1, 2016.

Veronica Hawthorne; Payroll Manager, Budget, Payroll & Risk Management; change in pay grade; salary \$58,653 per fiscal year, prorated from the effective date of August 1, 2016.

Sherry O'Neal; Risk Manager, Budget, Payroll & Risk Management; change in pay grade; salary \$57,633 per fiscal year, prorated from the effective date of August 1, 2016.

Kevin Smith; Institutional Computer Services Director, Office of Information Technology; change in salary to \$95,890 per fiscal year, prorated from the effective date of September 1, 2016.

Cynthia Stong; from Degree Completion Recruiter, Dean, Extended Learning, to Online Enrollment Manager, Dean, Extended Learning; salary \$62,134 per fiscal year, prorated from the effective date of August 1, 2016.

Dawn Underwood; Associate Dean for Sponsored Programs, Office of Sponsored Programs; change in salary to \$98,935 per fiscal year, prorated from the effective date of August 1, 2016.

## **Separations**

Kelsie Gallion; Enrollment Management Reporting Specialist; Admissions and High School Relations; effective September 7, 2016.

Franci Rubin; Enrollment Management Systems Coordinator; Admissions and High School Relations; effective September 15, 2016.

Caroline Savage, Program Director; Institute for Community Sustainability; Division of University Engagement, effective September 23, 2016.

Travis Smith; Athletic Studies Assistant Director, University College; effective August 15, 2016.

Jalal Zreba-Dover; Assistant Chief Instructor Pilot, Department of Aviation Technology; effective September 9, 2016.

## **ATHLETICS**

### **Appointments**

Morgan Allee; Assistant Coach, Softball; salary \$24,000; effective September 7, 2016.

James Schmeits; Basketball Operations Director; salary \$47,476; effective August 1, 2016.

Jenna Smith; Assistant Coach, Women's Basketball; salary \$45,085; effective September 1, 2016.

### **Change in Status and/or Pay Rate/Promotion**

Janet Eaton, Assistant Coach, Women's Basketball; salary adjustment to \$72,829; effective September 1, 2016.

Joshua Keister; Assistant Coach, Women's Basketball; salary adjustment to \$72,380; effective September 1, 2016.

### **Separations**

Megan Stone; Assistant Coach, Softball; effective August 31, 2016.

---

## **6g Grants and Contracts**

### 1. Indiana Department of Education, Fund No. 549118, Proposal 16-144

An agreement in the amount of \$350,000.00 has been received from Indiana Department of Education for the project entitled, "Promoting Achievement for Students with Sensory Loss (PASS)," under the direction of Carol Wetherell, Blumberg Center, for the period October 1, 2016 through September 30, 2017.

### 2. American Heart Association, Fund No. 549121, Proposal 16-075

An agreement in the amount of \$231,000 has been received from American Heart Association for the project entitled, "Genetic, Genomic, and Computational Analyses of Cardiogenic Roles of Forkhead Transcription Factors," under the direction of Shaad Ahmad, The Center for Genomic Advocacy, for the period July 1, 2016 through June 30, 2019.

### 3. Union Hospital, Fund No. 549123, Proposal 17-013

An agreement in the amount of \$179,838.00 has been received from Union Hospital for the project entitled, "Athletic Training Clinical Affiliation and Graduate Assistantship," under the direction of Kenneth Games, Department of Applied Medicine and Rehabilitation, for the period August 1, 2016 through July 31, 2018.

4. Indiana Commission for Higher Education, Fund No. 549124, Proposal 17-019

An agreement in the amount of \$2,000.00 has been received from Indiana Commission for Higher Education for the project entitled, "2016-2017 ScholarCorps AmeriCorps Program," under the direction of Roberta Allen, Center for Student Success, for the period August 1, 2016 through July 31, 2017.

5. University of Southern Indiana, Fund No. 549125, Proposal No. 17-018

A sub agreement under the U.S. Department of Education in the amount of \$57,156.00 has been received from University of Southern Indiana for the project entitled, "Creating Algebra Teaching Communities for Hoosiers (CATCH)," under the direction of Yi-Yin Ko, Department of Mathematics and Computer Science, for the period April 1, 2016 through March 31, 2017.

6. Indiana University, Fund No. 549126, Proposal No. 17-007

A sub agreement under the Indiana State Department of Health in the amount of \$3,028.00 has been received from Indiana University for the project entitled, "Development, Recruitment, and Retention of Mental Health and Substance Abuse Disorder Health Professionals in Rural Indiana," under the direction of Eliezer Bermudez, Dean's Office, Health and Human Services, for the period July 1, 2016 through June 30, 2017.

7. Indiana University, Fund No. 549127, Proposal No. 16-080

A sub agreement under The Grace M. Showalter Trust Foundation in the amount of \$37,950.00 has been received from Indiana University for the project entitled, "Regulation of Adipose and Ling Tissue Eosinophil Accumulation by Adiponectin," under the direction of Steven Templeton, The Center for Genomic advocacy, for the period July 1, 2016 through June 30, 2017.

8. National Council of University Research Administrators, Fund No. 549131, Proposal 16-149

An agreement in the amount of \$2,000.00 has been received from National Council of University Research Administrators for the project entitled, "2016 EARMA-NCURA Fellowship," under the direction of Dawn Underwood, Office of Sponsored Programs, for the period August 24, 2016 through August 23, 2017.

---

## 6h Agreements

### Performer, Entertainment, & Lecturer Agreements

TLT Tactical Laser Tag

### Clinical Affiliation Agreements

CHI Nebraska

Diversicare Management Services Co.

ECHO(Exceptional Children Have Opportunities)

HPRC Human Performance & Rehab Centers, Inc.

Kettering Health Network

MD2U Management  
Mercy Health Miami University  
North Alabama Bone and Joint PC  
Pine Street Physical and Occupational Therapy  
Prairie Emergency Physicians  
St. Vincent Clay Hospital, Inc.  
St. Vincent Anderson Regional Hospital, Inc.  
Victoria Women's Clinic

---

## 6i Board Representation at University Events

### Events Requiring Board Representation

October 20, 2016      10:00 a.m., Employee Recognition Brunch, Sycamore Banquet Center

December 16, 2016      Board of Trustees Meeting, State Room, Tirey Hall

December 17, 2016      9:30 a.m., Commencement Brunch, Condit House  
11:45 a.m., Commencement Ceremony, Hulman Center

### Optional Events

October 15, 2016      NCAA Cross Country Pre-Nationals, Laverne Gibson Course

November 17, 2016      NCAA Cross Country Banquet, Hulman Center

November 19, 2016      NCAA Cross Country Nationals, Laverne Gibson Course

December 4, 2016      Community Holiday Open House, Condit House

December 7, 2016      Faculty and Staff Holiday Open House, Condit House

Please find a full list of University events at the following link: <http://www.indstate.edu/all-events>.

If you are planning to attend any of these events, please contact Kay Ponsot so that the appropriate arrangements can be made. Contact Kay at (812)237-7768 or [kay.ponsot@indstate.edu](mailto:kay.ponsot@indstate.edu).

---

## 6j In Memoriam

### **IN MEMORIAM: Mr. Louis Tanoos**

WHEREAS, Mr. Louis Tanoos, retired Groundskeeper of Indiana State University, died on the twelfth day of August two thousand sixteen and;

WHEREAS, Mr. Louis Tanoos, had given loyal and devoted service to Indiana State University for seven years and had gained the respect of those who knew him as a dedicated co-worker and friend;

THEREFORE, BE IT RESOLVED, that the Indiana State University Board of Trustees by this Resolution expresses to his family deep sympathy and condolence and further expresses gratitude and respect for the superior service which he gave to the University; and

BE IT FURTHER RESOLVED, that this Resolution be spread on the records of the minutes of the Indiana State University Board of Trustees, and that a copy thereof be duly executed and transmitted to his family.

### **IN MEMORIAM: Carolyn Willis**

WHEREAS, Carolyn Willis, retired Custodial Worker II for Facilities Management of Indiana State University, died on the seventeenth day of August two thousand and sixteen; and

WHEREAS, Carolyn Willis had given loyal and devoted service to Indiana State University for over seventeen years and had gained the respect of those who knew her as a dedicated co-worker and friend;

THEREFORE, BE IT RESOLVED, that the Indiana State University Board of Trustees by this Resolution expresses to her family deep sympathy and condolence and further expresses gratitude and respect for the superior service which she gave to the University; and

BE IT FURTHER RESOLVED, that this Resolution be spread on the records of the minutes of the Indiana State University Board of Trustees, and that a copy thereof be duly executed and transmitted to her family.

### **IN MEMORIAM: Freda Weir**

WHEREAS, Fred Weir, retired Custodial Worker of Indiana State University, died on the eighteenth day of August two thousand and sixteen; and

WHEREAS, Freda Weir had given loyal and devoted service to Indiana State University for over fifteen years and had gained the respect of those who knew her as a dedicated co-worker and friend;

THEREFORE, BE IT RESOLVED, that the Indiana State University Board of Trustees by this Resolution expresses to her family deep sympathy and condolence and further expresses gratitude and respect for the superior service which she gave to the University; and

BE IT FURTHER RESOLVED, that this Resolution be spread on the records of the minutes of the Indiana State University Board of Trustees, and that a copy thereof be duly executed and transmitted to her family.

**IN MEMORIAM: Jean Kennedy**

WHEREAS, Jean Kennedy, retired Senior Secretary for Student Affairs of Indiana State University, died on the nineteenth day of August two thousand and sixteen; and

WHEREAS, Jean Kennedy had given loyal and devoted service to Indiana State University for over seventeen years and had gained the respect of those who knew her as a dedicated co-worker and friend;

THEREFORE, BE IT RESOLVED, that the Indiana State University Board of Trustees by this Resolution expresses to her family deep sympathy and condolence and further expresses gratitude and respect for the superior service which she gave to the University; and

BE IT FURTHER RESOLVED, that this Resolution be spread on the records of the minutes of the Indiana State University Board of Trustees, and that a copy thereof be duly executed and transmitted to her family.

---

## **7 Old Business**

---

## **8 Adjournment**

The meeting was adjourned at 2:37 p.m.